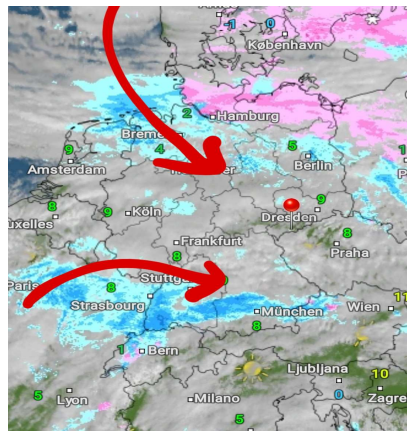
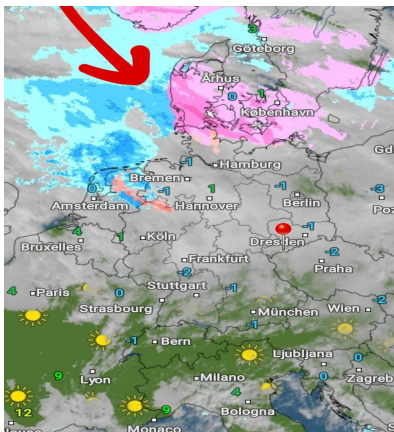
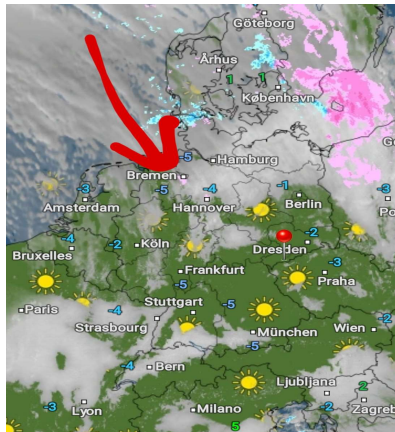


Mittwoch, 22.12.2021 12:00 Uhr Donnerstag, 23.12.2021 12:00 Uhr Freitag, 24.12.2021 12:00 Uhr



| | 21.12.2021 | 22.12.2021 | 23.12.2021 | 22.12.2021 | 23.12.2021 | 24.12.2021 | 23.12.2021 | 24.12.2021 | 25.12.2021 |
|-----------------------------------|------------|------------|------------|------------|------------|------------|------------|------------|------------|
| Höchstwerte in °C | 1 | 2 | 4 | 2 | 4 | 7 | 4 | 7 | 0 |
| Bewölkungsgrad | | | | | | | | | |
| Tiefstwerte in °C | -5 | -7 | -4 | -7 | -4 | 1 | -4 | 1 | -8 |
| Niederschlagsdauer in h: | 1 | | 3 | | 3 | 7 | 3 | 7 | 3 |
| geschlossene Schneedecke: | | | | | | | | | |
| rel. Luftfeuchtigkeit außen in %: | 87 | 84 | 76 | 84 | 78 | 89 | 76 | 89 | 89 |
| Windböen im km/h: | 6 | 10 | 18 | 10 | 18 | 28 | 18 | 28 | 8 |
| vorh. Windrichtung: | SO | S | S | S | S | NNO | S | NNO | NO |
| vorh. Wolkenart: | Sc | Cs | As | Cs | As | Ns | As | Ns | Ns |
| rel. Luftdruck in hPa: | 1026 | 1027 | 1013 | 1027 | 1013 | 1002 | 1013 | 1002 | 1009 |
| Luftdruck Tendenz: | bleibend | fallend | fallend | fallend | fallend | bleibend | fallend | bleibend | steigend |

